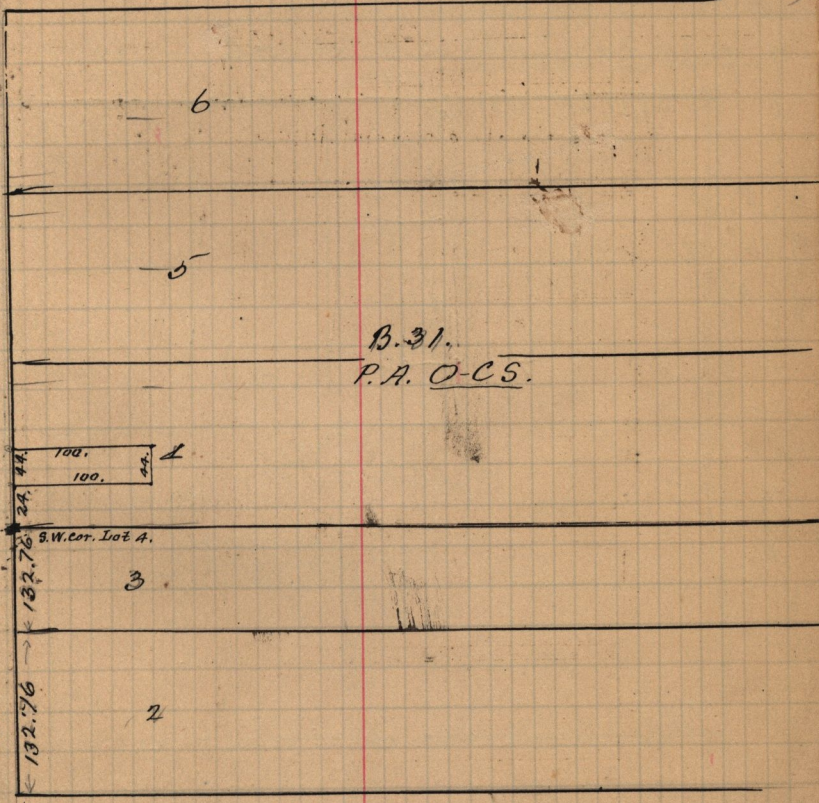


Apr 13 1893

Survey made for Cha^s Woodmansee.
Pt. Lot 4, B31, P.A. OCS

(John Layman & W. Clark Jun)

city ME, 23rd St.



city ME 24th St. & Wash. Ave.

→ Lies to point on 10 ft. offset in Wash. Ave W. of S.W. cor. Lot 4.
 E 11.3 ft. to tack in N.W. cor. blazed post.
 S.W. 46.12 ft. = tack in blazed pole fronting Wright's old store,
 Fees \$ 5.00